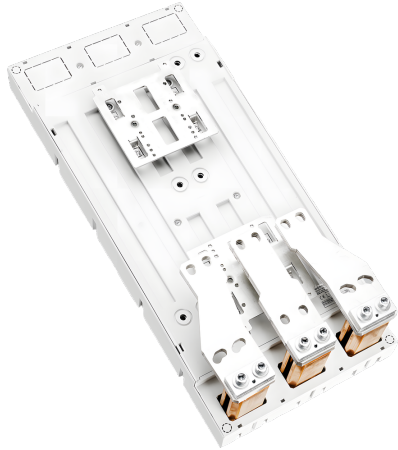


## busbar adapter 1400 A (32731)



The picture may show a similar product.

### Description

Part No.: **32731** 000A

EQUES 185Power

busbar adapter 1400 A

300 x 652, connection bottom, clamp connection

for Eaton NZM4 (1600 A), Siemens 3VL8 (1600 A)

for busbars 30, 40, 60, 80, 100, 120 x 10

### System

185Power

**Product group** 05

**Subgroup** 48

**pack size** 1

**EAN** 4021267327316

**ETIM 5.0** EC001531

**ETIM 8.0** EC001531

**ETIM 10.0** EC001531

# Approvals

## Standards

IEC 61439-1:2020

UL 508

## Approvals

UL



for UL feeder circuits >250V

type number: EQ185-A1600-C

UL file: E123577, UL category (for USA): NMTR <https://www.ul.com>

UL file: E123577, UL category (for Canada): NMTR7 <https://www.ul.com>

CCC approval: no certification required

# Technical data

## Details IEC

### Standards

IEC 61439-1:2020

### Electrical data IEC

rated current (IEC): 1400 A

rated voltage (IEC) AC: 800 V

rated voltage (IEC) DC: 800 V

rated isolation voltage  $U_i$  AC: 1000 V

rated isolation voltage  $U_i$  DC: 1000 V

rated surge voltage  $U_{imp}$ : 12 kV

rated peak withstand current  $I_{pk}$  max.: 106 kA

rated short-time withstand current  $I_{CW}$  (1.0 s) max.: 50 kA

power dissipation of the article:

The power dissipation at a typical load of 80 % results to 331.5 W.

(The power dissipation at full load would be 518.0 W.)

mit Siemens 3VL8 1600A bis 1320A einsetzbar!

mit Eaton NZM4 1600A bis 1400A einsetzbar!

## Details UL

### Standards

UL 508

for UL feeder circuits >250V

### Electrical data UL

rated current (UL): 1200 A

rated voltage (UL) AC: 1000 V

rated frequency (UL): 50 / 60 Hz

SCCR unprotected max.: 50 kA

3 cycles (without OPD) @ 1000 V AC

### Mechanical data

W x H x D: 300 x 652 x 76

weight: 2800.0 kg/100

poles: 3-pole

for busbars: 30, 40, 60, 80, 100, 120 x 10

CT can be integrated in the device: ja

### Material properties

halogen-free: Yes

## Application notes

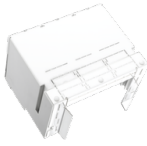
Ausreichend Platz für 2x3 Stromwandler vorhanden.

the short-circuit capacity of the combination of adapter and MCCB depends on the MCCB

for UL feeder circuits >250V

# Accessories

## covers



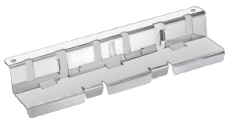
### **32701 000A**

IP20 protection cover (front)

incl. 3 top covers

300 mm wide

for: Eaton NZM4, GE FK1600, Legrand DPX<sup>3</sup> 1600



### **32704 000A**

touch-safe protection shroud IP20 (rear installation)

for all adapters

## current transformers class 1



### **32983 000**

current transformer 630 A / 5 A

size CT4

5 VA / class 1



### **32984 000**

current transformer 800 A / 5 A

size CT4

5 VA / class 1



### **32985 000**

current transformer 1000 A / 5 A

size CT4

5 VA / class 1



### **32986 000**

current transformer 1250 A / 5 A

size CT4

5 VA / class 1



**32987 000**

current transformer 1600 A / 5 A

size CT4

5 VA / class 1

<https://pim.woehner.de/EN/EN/1000174353>